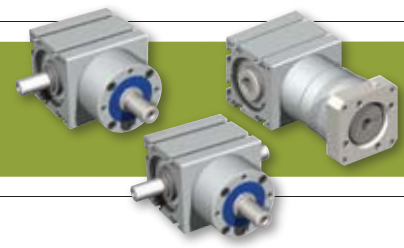


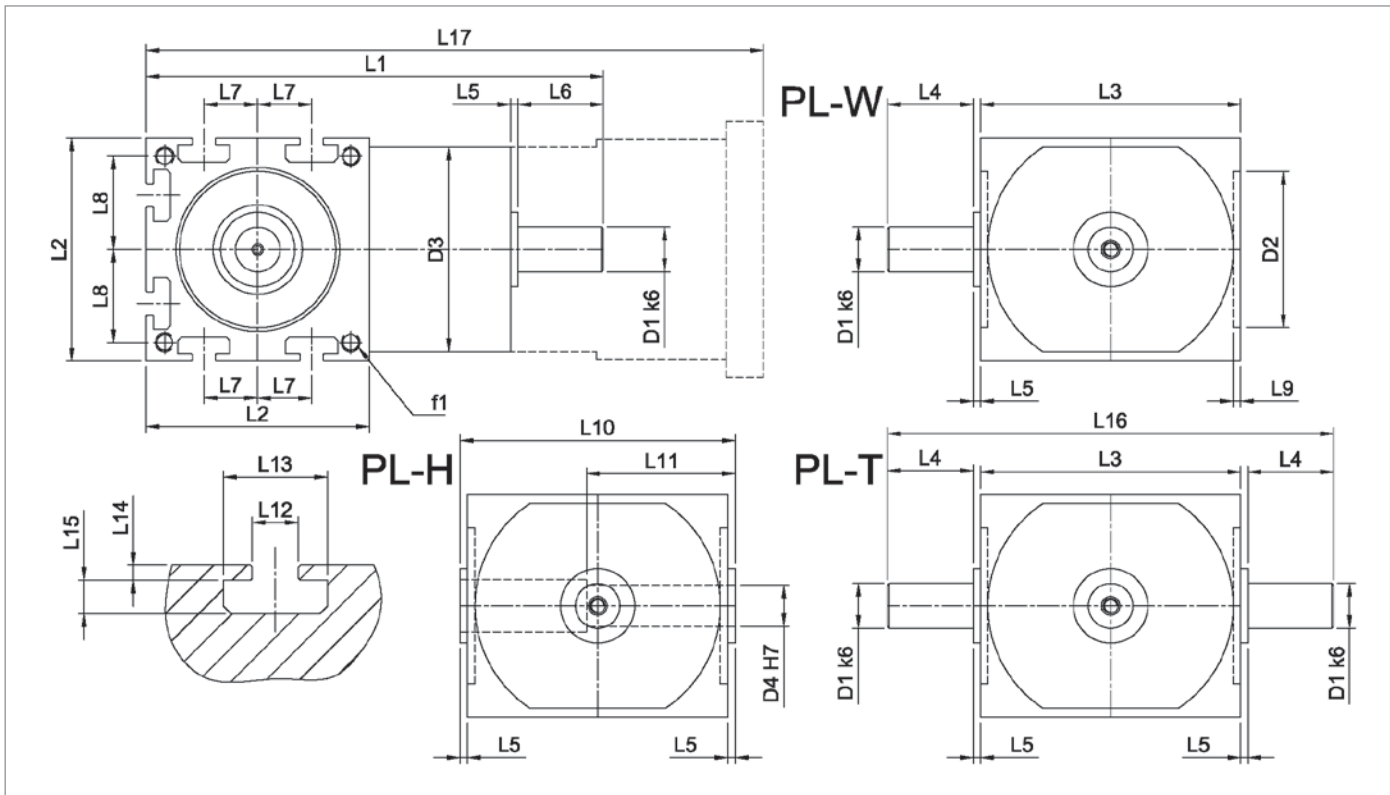


▶ PL SERIES: PL-W, PL-H, PL-T



PL Series		60	75	90	110	
Ratios Available		1:1, 2:1				
Nominal Output Torque (T_{2n})	Nm (lb-in)	1:1	10 (89)	17 (150)	25 (221)	40 (354)
		2:1	11 (97)	20 (177)	40 (354)	80 (708)
Max Acceleration Output Torque (T_{2B})	Nm	-	15 (133)	30 (266)	60 (531)	120 (1062)
Nominal Input Speed (n_{in})	RPM	-	2250	2000	1750	1500
Max Input Speed (n_{1max})	RPM	-	3000	3000	3000	3000
Standard Output Backlash (j)	arcmin	-	< 20	< 18	< 15	< 14
Allowable Radial Load (F_{rad}) ¹⁾	N (lbs)	-	500 (113)	850 (191)	1400 (315)	2300 (518)
Allowable Axial Load (F_{axial})	N (lbs)	-	250 (56)	425 (96)	700 (158)	1150 (259)
Weight (m)	kg (lbs)	-	1.3 (3)	2.2 (5)	3.9 (9)	6.4 (14)
Mass Moment of Inertia (J_r)	kg cm ² (lb-in ²)	1:1	0.49 (0.17)	1.24 (0.42)	3.86 (1.32)	9.56 (3.27)
		2:1	0.3 (0.1)	0.61 (0.21)	1.86 (0.64)	4.18 (1.43)
Efficiency at Load		> 98%				
Service Life		> 10,000 hours				
Lubrication		Synthetic Grease				
Maximum Temperature		100°C				

1) Load applied to the center of the shaft



PL Series		60		75		90		110	
		mm	(in)	mm	(in)	mm	(in)	mm	(in)
D1 k6	shaft diameters	12	(0.472)	15	(0.591)	20	(0.787)	25	(0.984)
D2	pilot bore diameter	42	(1.654)	55	(2.165)	68	(2.677)	80	(3.15)
D3	housing diameter	66	(2.598)	72	(2.835)	82	(3.228)	95	(3.74)
D4 H7 *	hollow bore diameter	11	(0.433)	14	(0.551)	19	(0.748)	24	(0.945)
	key width (PL-H)	4	(0.157)	5	(0.197)	6	(0.236)	8	(0.315)
f1	mounting holes	M5		M6		M6		M8	
L1	total length	123	(4.843)	145.5	(5.728)	171	(6.732)	200	(7.874)
L2	housing size	60	(2.362)	75	(2.953)	90	(3.543)	110	(4.331)
L3	housing width	70	(2.756)	85	(3.346)	105	(4.134)	120	(4.724)
L4	usable shaft length	23	(0.906)	28	(1.102)	36	(1.417)	45	(1.772)
L5	shoulder height	2	(0.079)	2	(0.079)	2	(0.079)	2	(0.079)
L6	usable shaft length	23	(0.906)	28	(1.102)	36	(1.417)	45	(1.772)
L7	slot location	14.5	(0.571)	17.5	(0.689)	22.5	(0.886)	27.5	(1.083)
L8	hole location	25.0	(0.984)	32	(1.26)	38	(1.496)	46	(1.811)
L9	pilot depth	2	(0.079)	2.5	(0.098)	3	(0.118)	3	(0.118)
L10	gearbox width	74	(2.913)	89	(3.504)	109	(4.291)	124	(4.882)
L11 **	hollow depth	40	(1.575)	50	(1.969)	60	(2.362)	70	(2.756)
L12	slot width	6.2	(0.244)	8.2	(0.323)	8.2	(0.323)	10.2	(0.402)
L13	slot width	14	(0.551)	19	(0.748)	19	(0.748)	22	(0.866)
L14	slot depth	2	(0.079)	3	(0.118)	4	(0.157)	6	(0.236)
L15	slot depth	4.5	(0.177)	6	(0.236)	6	(0.236)	8	(0.315)
L16	gearbox width	120	(4.724)	145	(5.709)	181	(7.126)	214	(8.425)
L17 ***	total length	157	(6.181)	180	(7.087)	205	(8.071)	245	(9.646)

* mating shaft should have g6 tolerance. ** mating shaft for hollow bore is only supported through the L11 length. ***depending on motor, length may vary



Recommended Output Coupling (if necessary)

metal bellows	KLC-25	KLC-25	KLC-50	KLC-125
elastomer	EKM-20	EKM-30	EKM-60	EKM-150

TYPE CODES FOR PL SERIES

Example: PL - W B - 090 - 001 G - [115 - 201] - S111

Gearbox Series

PL = Power Lite

Gearbox Style

H = Hollow output shaft

W = Single output shaft

T = Dual output shaft

Input Type

B = Bellows coupling input

E = Elastomer coupling input

L = Shaft input

Gearbox Size

060, 075, 090, 110

Special Options

Assigned by GAM

Motor Mount Kit

Assigned by GAM

Options Available

H = Plain Shaft

G = Keyway on output

(PL-H only available keyed)

Ratio

1, 2

Tolerances (mm)

Size	k6	H7	g6
Over 6	+0.010	+0.015	-0.005
Thru 10	+0.001	0	-0.014
Over 10	+0.012	+0.018	-0.006
Thru 18	+0.001	+0	-0.017
Over 18	+0.015	+0.021	-0.007
Thru 30	+0.002	0	-0.020
Over 30	+0.018	+0.025	-0.009
Thru 50	+0.002	0	-0.025
Over 50	+0.021	+0.030	-0.010
Thru 80	+0.002	0	-0.029